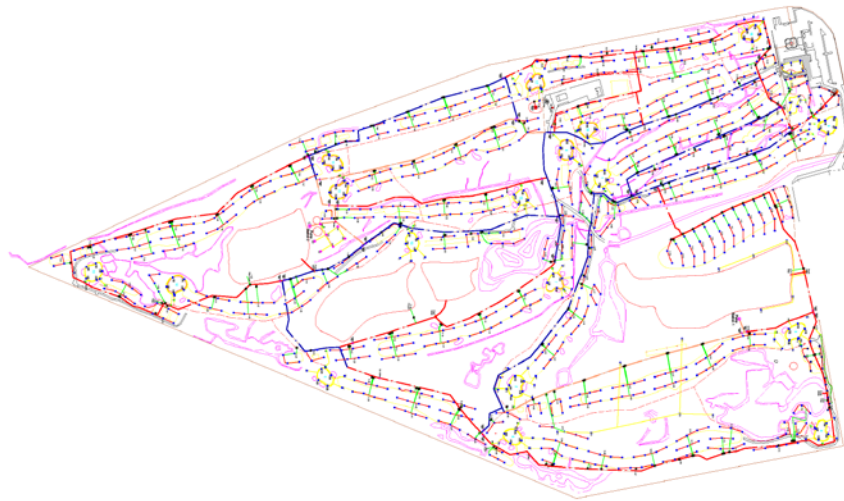


# SPORTING / GOLF PROJECT EXAMPLE

## Royal Cape As-Built



Scale: 1 : 1500

TURF-AG PRODUCTS	
ROYAL CAPE GOLF CLUB	
Designed by:	
Date:	30 June 2010
<b>Pipe key</b>	
200mm Class 8 CPPE	
150mm Class 8 HDPE	
100mm Class 10 HDPE	
150mm Class 8 HDPE	
110mm Class 8 PVC	
100mm Class 8 PVC	
200mm Class 8 PVC	
<b>Sprinkler / Valve key</b>	
Green Turf Valve	
Master Station	
Master Alarm ICV Valve	
Alarm Bell Valve	
Flush Valve	
Air Valve	
Isolation Valve	
Number 10" Manhole	
Number 0.780 Gear Driven Sprinkler	
Number 0.710 Gear Driven Sprinkler	
Number 0.875 Gear Driven Sprinkler	
Number 0.875 Gear Driven Sprinkler	
Number 0.990 Gear Driven Sprinkler	
Central Control Computer	
Number VIK 1020n Decoder Controller	
Pump Station	
Scale: 1 : 1500	File: Royal Cape As-Built



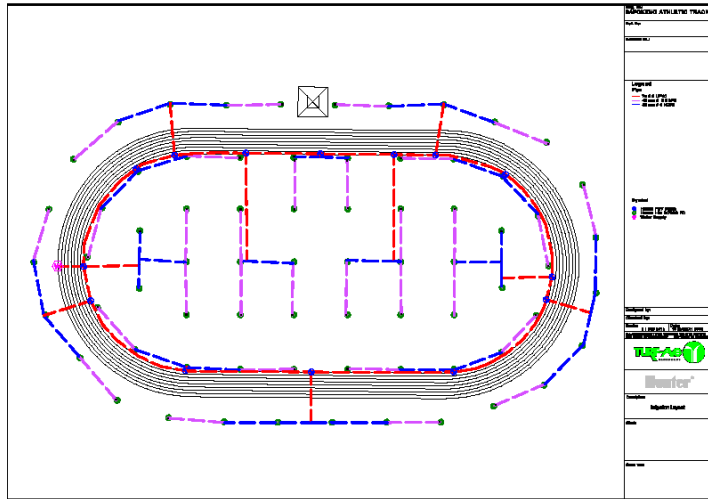
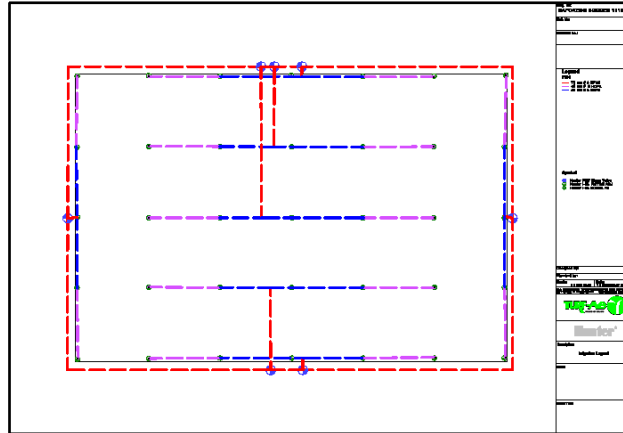
## ROYAL CAPE GOLF CLUB

CAPE TOWN

A wide variety of Rotators from the Hunter Golf series were used with a magnificent view of Table Mountain in the backdrop. Fully Automated System.



# SPORTING / GOLF PROJECT EXAMPLE



## ROYAL BAFOKENG SPORT COMPLEX

RUSTENBURG

Newly developed Sport Complex with state of the art training facilities. Also provided for training fields as part of the 2010 Soccer World Cup. The Complex consist of 12 Standard Soccer fields, 3 smaller soccer fields, an athletic stadium and yet to be completed Astro fields. Irrigation design done by JP de Villiers, Landscape contractors were Grastech whom work with Endemic Landscape Architects.

